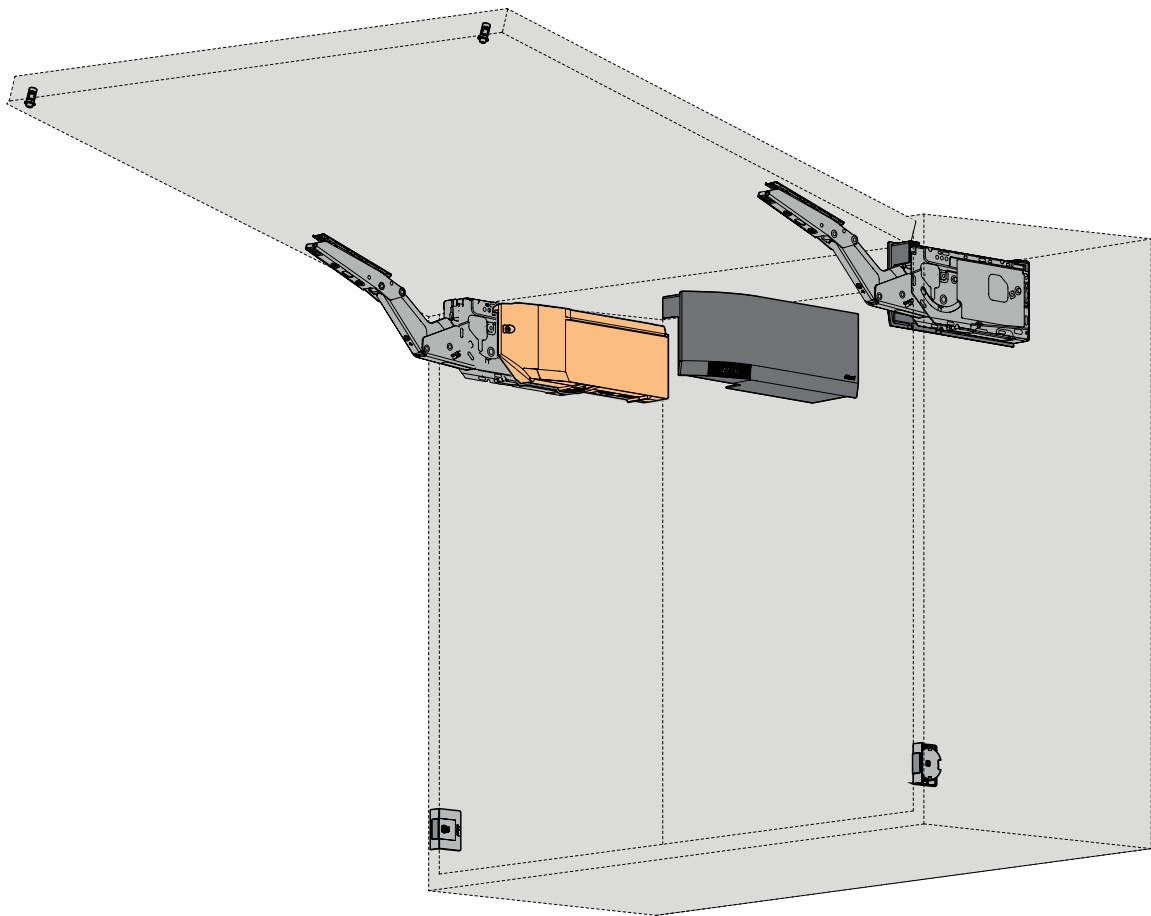


AVENTOS HK top
SERVO-DRIVE
爱翻®灵云展® 电动碰碰开



Installation sheet

安装说明



SERVO-DRIVE

by Blum

电动碰碰开



Installation video
安装视频



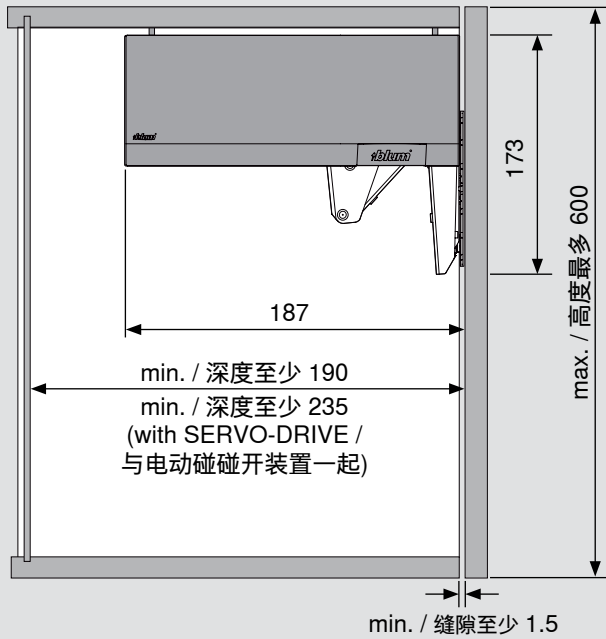
EA app
百隆安装宝 App

**AVENTOS HK top
SERVO-DRIVE**
爱翻®灵云展® 电动碰碰开

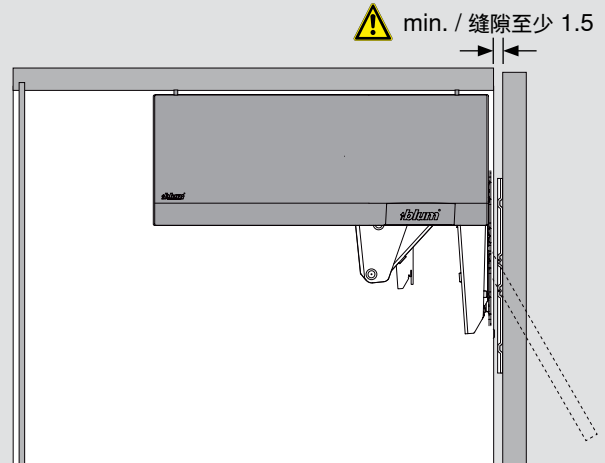


**Planning specifications
规划细节**

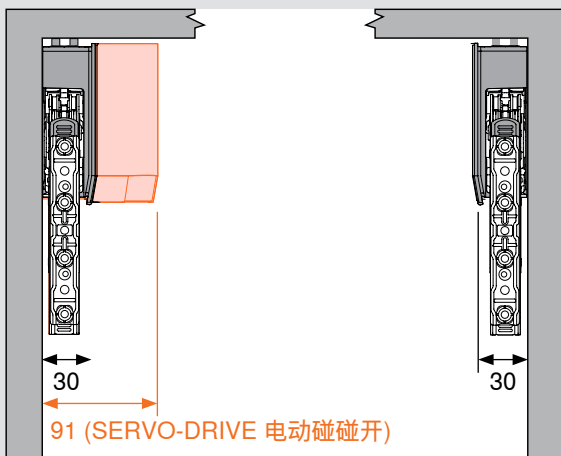
Door and hardware clearance 门与五金所需空间



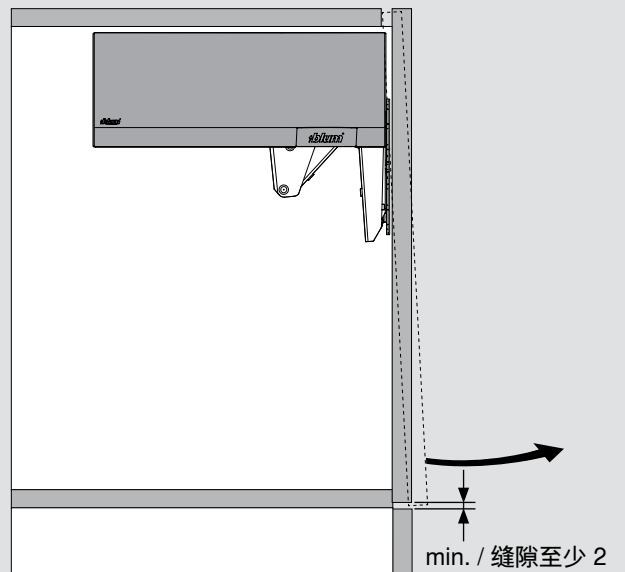
Minimum gap 最小縫隙



Lift mechanism thickness 省力装置厚度



Minimum bottom gap 底部最小縫隙

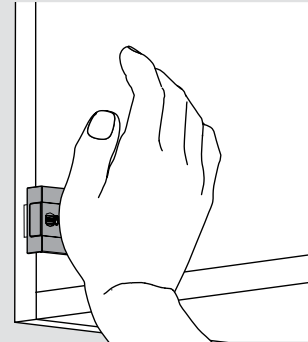
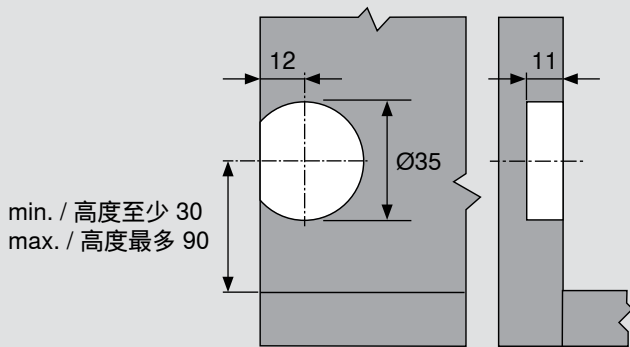


**AVENTOS HK top
SERVO-DRIVE**
爱翻®灵云展® 电动碰碰开



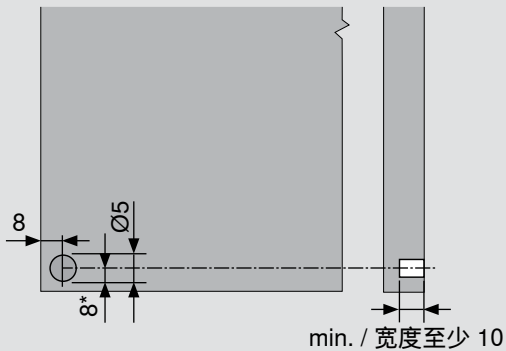
**Assembly
装置**

Installation of SERVO-DRIVE activation switch 安装电动碰碰开开关



The activation switch should be installed by pressing into the cabinet side with your hand. Do not use hammer to install.
用手将电动碰碰开开关推入柜体侧板。请勿使用锤子安装。

Installation of distance bumpers 安装缓冲塞



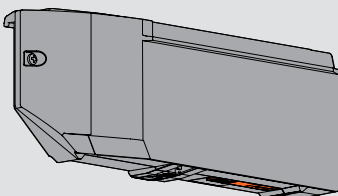
Install into door front 安装至橱前门



The distance bumper should not touch the SERVO-DRIVE switch.
缓冲塞不应碰到电动碰碰开开关。

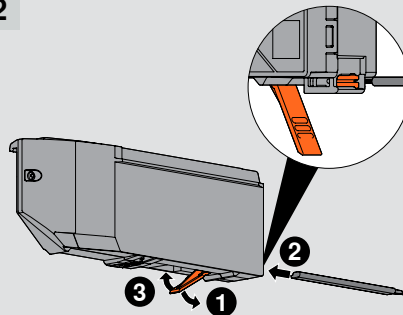
Installation of universal cable 安装电源线

1



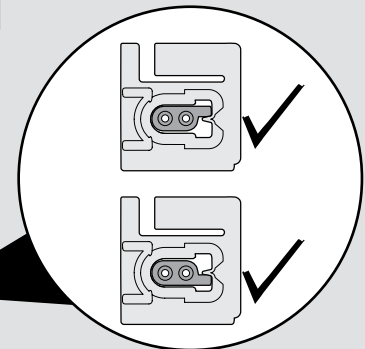
Pull down orange universal cable lock lever.
拉下橙色通用电源线定杆。

2



Insert universal cable (either end of the cable can be used). 插入电源线 (电源线的任何一端都可以使用)。

3



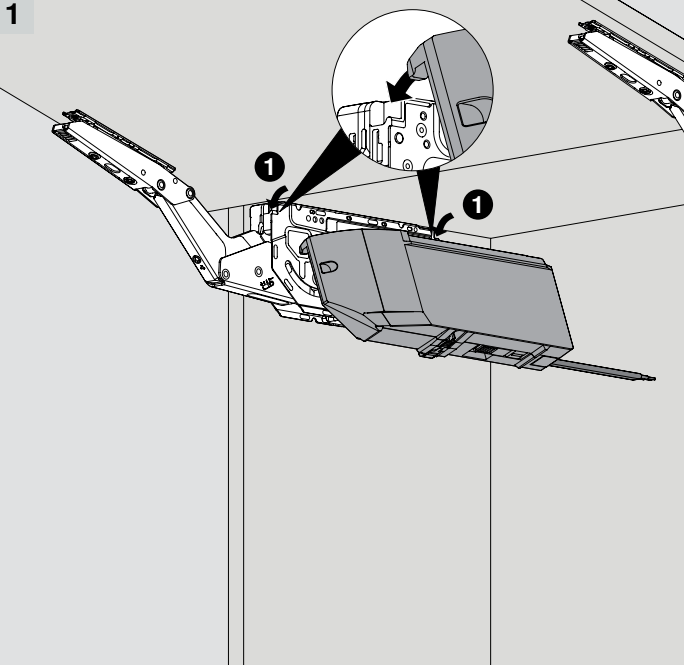
Once cable is inserted, push up on universal cable lock lever. 插入电源线后, 推上电源线定杆。

AVENTOS HK top
SERVO-DRIVE
爱翻®灵云展® 电动碰碰开

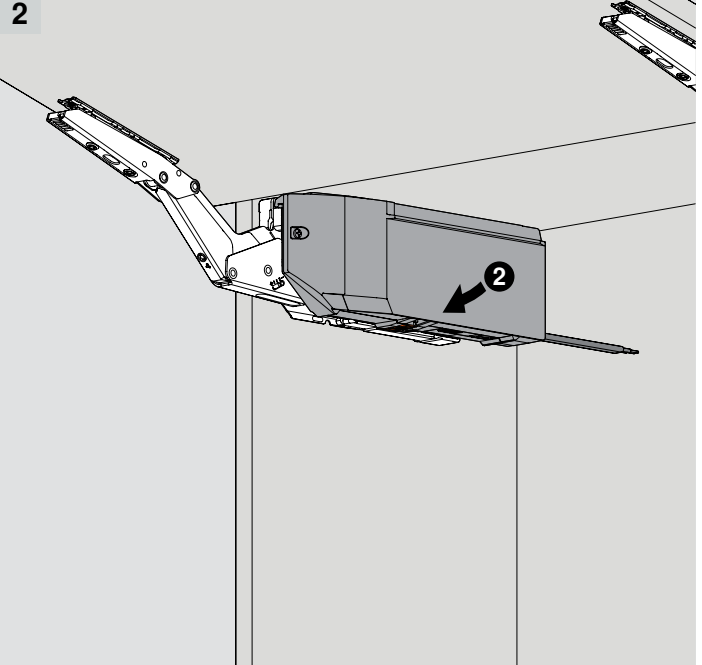


Assembly
装置

Installation of drive unit 安装传动装置



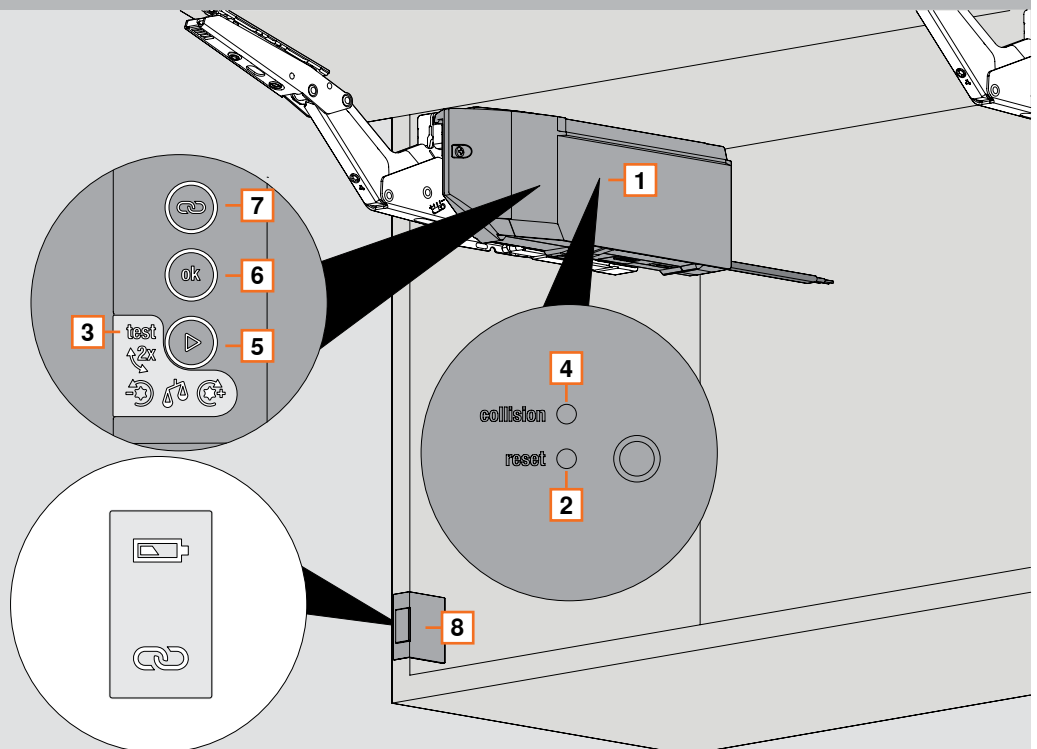
Position drive unit onto lift mechanism with locating tabs.
将传动装置放在省力装置的定位标签上。



Hold drive unit in place and press the bottom of the drive unit to lock it into place on the lift mechanism. Drive unit pin will self-locate during reference run. 将传动装置定位在正确的位置后再把底部扣上省力装置。传动装置快装技术将会在运行期间自动定位。

Function layout 按键配备

- 1 Drive unit
传动装置
- 2 [reset] button
[reset] 重启按钮
- 3 LED light display
LED灯 显示屏
- 4 [collision] button
[collision] 防碰撞按钮
- 5 [start] button
[start] 启动按钮
- 6 [ok] button
[ok] 确认按钮
- 7 [link] button
[link] 连接按钮
- 8 SERVO-DRIVE switch
电动碰碰开开关

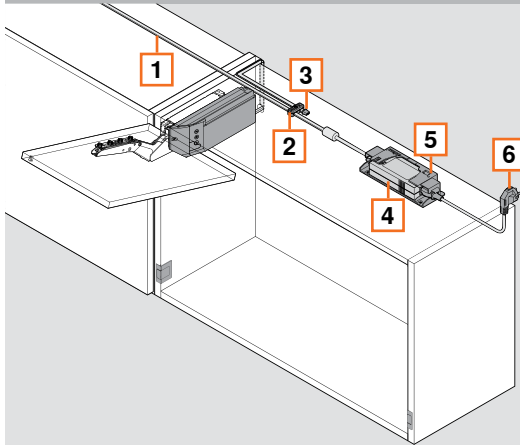


AVENTOS HK top
SERVO-DRIVE
爱翻®灵云展® 电动碰碰开



Transformer and accessories
电源适配器和配件

Assembly on cabinet top panel 橱柜上方装置

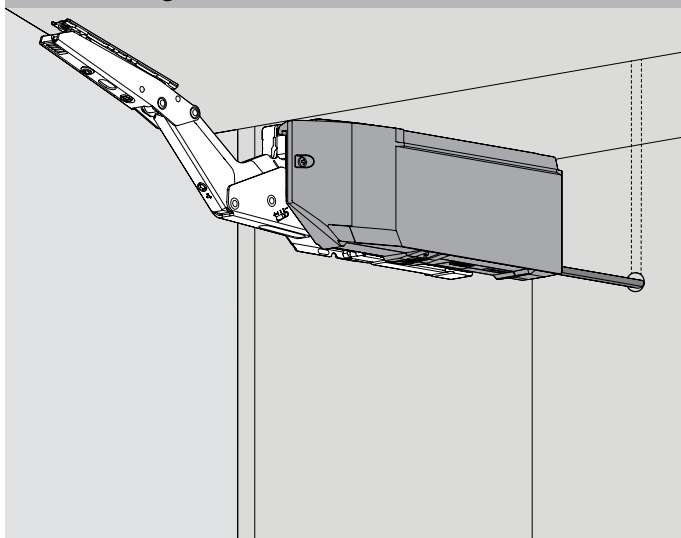


- | | |
|---------------------------------------|--|
| 1 Electrical cable
电源线 | 4 Blum transformer
百隆电源适配器 |
| 2 Connecting node
电线卡钉 | 5 Transformer unit housing
电源固定件 |
| 3 Cable end protector
线头保护帽 | 6 Plug
插头 |

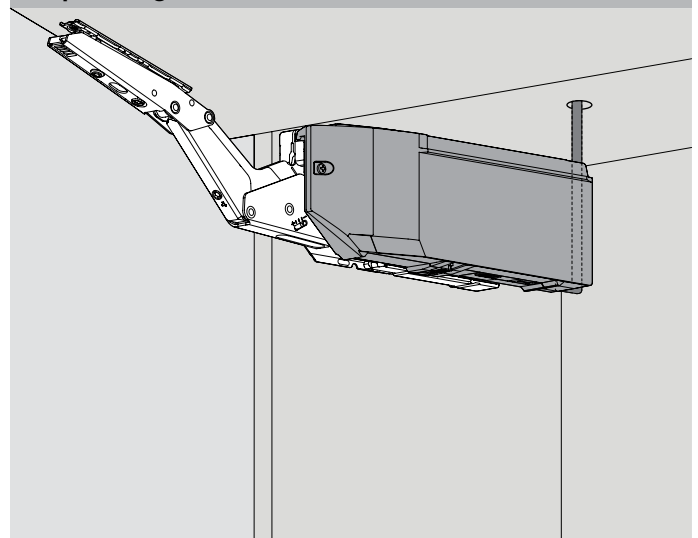


Only one Blum transformer can be connected to each electrical cable.
每条电源线只能连接一个百隆电源适配器。

Back cabling 背面布线

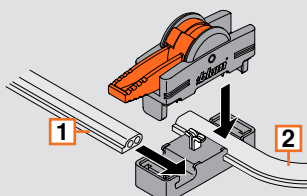


Top cabling 顶部布线

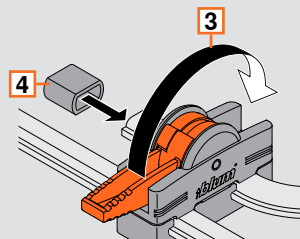


Extending electrical cable with connecting node 使用电线卡钉连接电源线

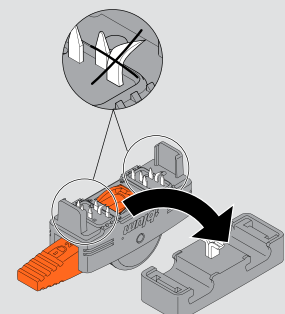
- 1** Insert electrical cable from power source onto open slot.
将从电源适配器的电源线放置在电线卡钉的开槽上。
- 2** Insert electrical cable for distribution onto the other open slot.
将分配电源的电源线放置在电线卡钉另一段的开槽上。



- 3** Flip the orange lever to lock electrical cables into place.
翻转橙色杠杆以将电源线锁定在位。
- 4** Cover exposed cable ends with cable end protector.
使用线头保护帽把电源线尾端盖起。



- ⚠** Do not damage piercing pins.
不要损坏尖刺。



**AVENTOS HK top
SERVO-DRIVE**
爱翻®灵云展® 电动碰碰开



**Overview of functions and
① Activate the SERVO-DRIVE switch**
功能概述和启用电动碰碰开开关

Start-up 启动

① Activate SERVO-DRIVE switch
启用电动碰碰开开关



② Start reference run 开始试运行模式

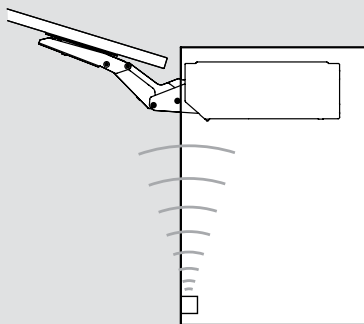
Deactivation 解除

⑤ Reset to factory setting 还原出厂设置

Additional features 附加功能

Optional 可选择	③ Activate synchronisation 启用同步模式
	④ Activate collision avoidance 启用防碰撞模式

① Activate SERVO-DRIVE switch 启用电动碰碰开开关

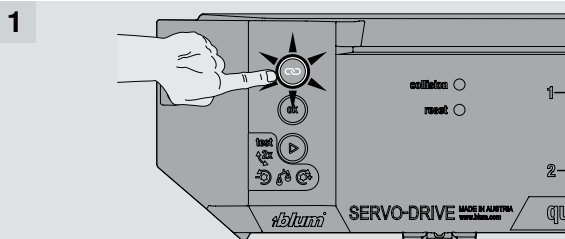


Set up the wireless connection between the SERVO-DRIVE switch(es) and the drive unit.

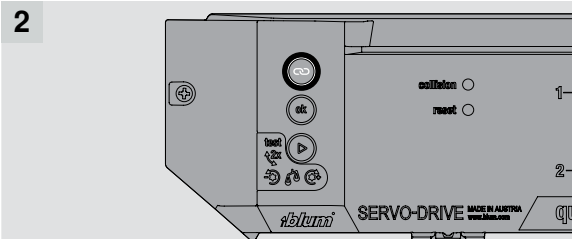
SERVO-DRIVE switches can only be assigned to a drive unit one at a time.

在电动碰碰开开关和传动装置之间建立无线连接。
一个电动碰碰开开关每次只能与一个传动装置进行连接。

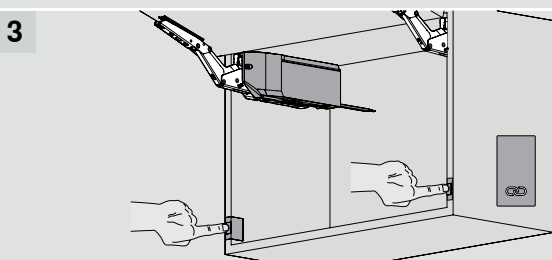
! One drive unit can be linked with up to a maximum number of 6 switches.
一个传动装置最多只能连接6个电动碰碰开开关。



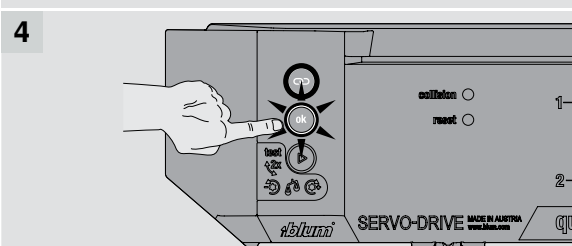
Press flashing [link] button.
按闪烁的 [link] 连接按钮。



[link] button lights up continuously.
[link] 连接按钮灯会持续亮着。



Press SERVO-DRIVE switch to link.
按电动碰碰开开关以进行连接。



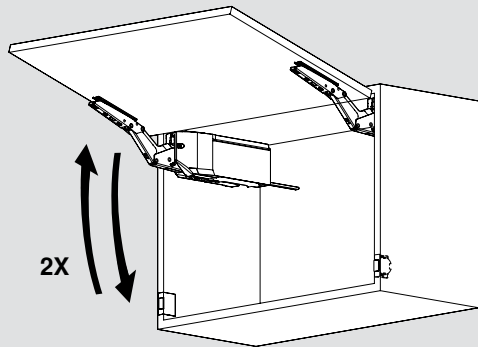
Press flashing [ok] button to complete link.
按闪烁的 [ok] 确认按钮以完成连接。

AVENTOS HK top
SERVO-DRIVE
爱翻®灵云展® 电动碰碰开



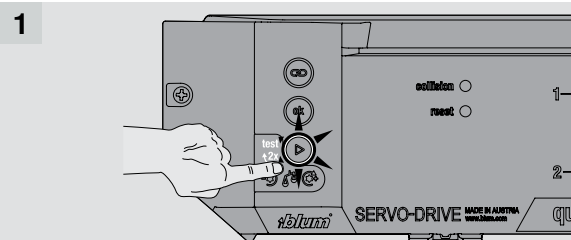
Ⓑ Start reference run
开始试运行模式

Ⓑ Start reference run 开始试运行模式

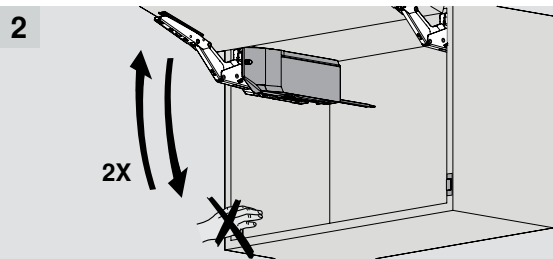


The drive unit will recognise the required parameters with a reference run.

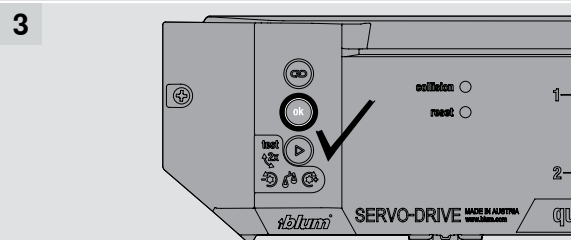
传动装置借助试运行来识别相关参数。



1 Press flashing [start] button.
按闪烁的 [start] 启动按钮。



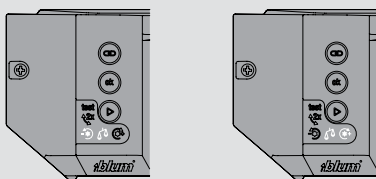
2 Door will open and close twice. Do not interrupt the motion.
橱前门将会自动打开关闭2次。请勿中途中止该步骤。



3 [ok] button lights up continuously. Setup is completed.
[ok] 确认按钮灯会持续亮着。设置完成。

Reference run error detection 试运行故障检测

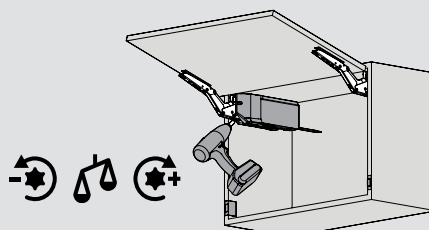
1 Unbalanced door error detected after reference run.
试运行后检测到橱柜门不平衡。



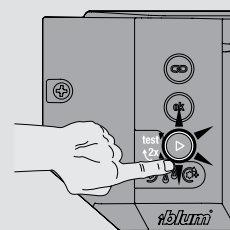
Too much tension
张力太多

Not enough tension
张力太少

2 Adjust tension accordingly to balance door.
调解张力以平衡橱柜门。



3 Press flashing [start] button to perform reference run again.
按闪烁的 [start] 启动按钮以再次执行试运行模式。

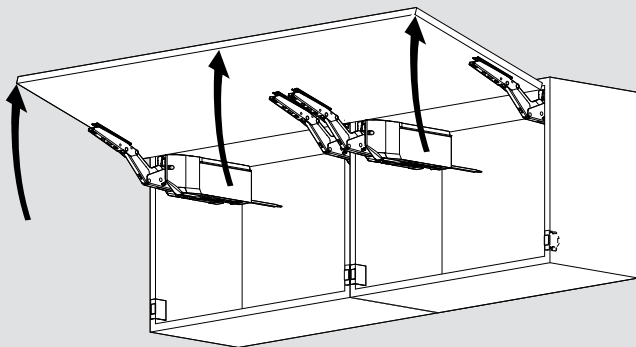


AVENTOS HK top
SERVO-DRIVE
爱翻®灵云展® 电动碰碰开



© Activate synchronisation
启用同步模式

© Activate synchronisation 启用同步模式



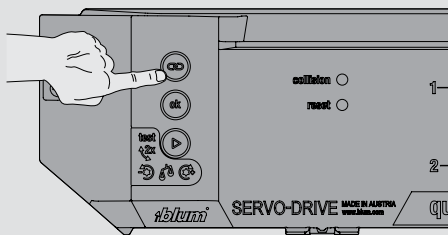
Up to 3 drive units can be synchronised to move together. This function is required for several cabinets with a single front.

最多可以同步3个传动装置,使其同步移动。
在多个橱柜共用一片橱前门时需要此功能。



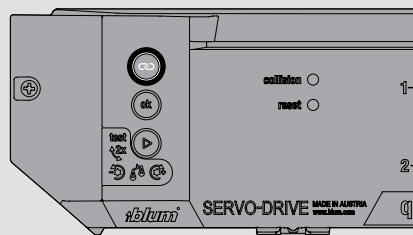
One drive unit can be linked with up to a maximum number of 6 switches.
一个传动装置最多只能连接6个电动碰碰开开关。

1



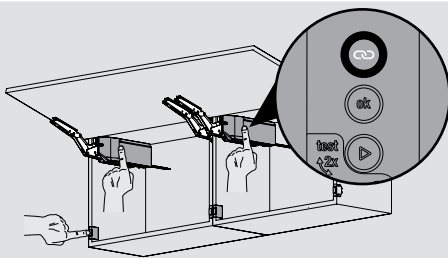
Press [link] button on first drive unit.
在第一个传动装置按 [link] 连接按钮。

2



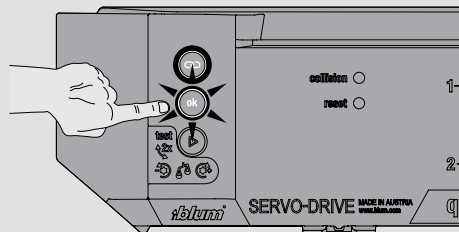
[link] button lights up in blue continuously.
[link] 连接按钮会以蓝色的灯持续亮着。

3



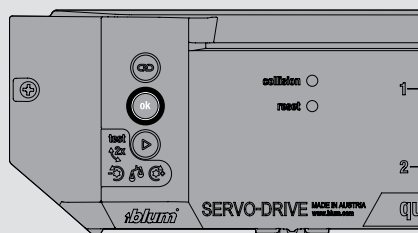
Press [link] button on second drive unit.
Recommend to link SERVO-DRIVE switches at this step.
在第二个传动装置按 [link] 连接按钮。
建议在此步骤连接电动碰碰开开关。

4



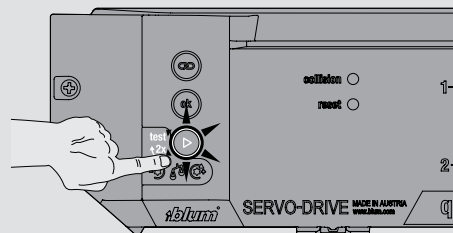
Press flashing [ok] button to confirm link.
按闪烁的 [ok] 确认按钮以确认连接。

5



[ok] button lights up continuously.
[ok] 确认按钮灯会持续亮着。

6



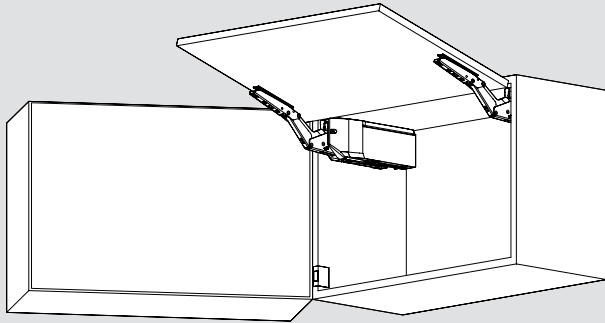
Press flashing [start] button to perform reference run and complete synchronisation.
按闪烁的 [start] 启动按钮执行试运行模式以完成同步模式。

AVENTOS HK top
SERVO-DRIVE
爱翻®灵云展® 电动碰碰开



ⓓ Activate collision avoidance
启用防碰撞模式

ⓓ Activate collision avoidance 启用防碰撞模式



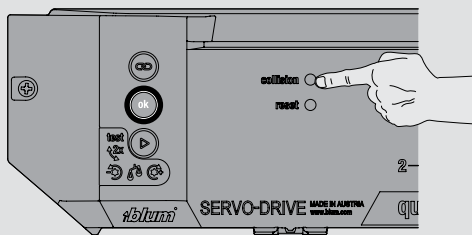
To avoid the collision of fronts, up to 6 drive units can be linked so that only 1 front can be opened at a time.

A front is prevented from opening as long as a linked front remains open.

为了避免橱前门碰撞,最多可以连接6个传动装置以便一次只能打开1个橱前门。

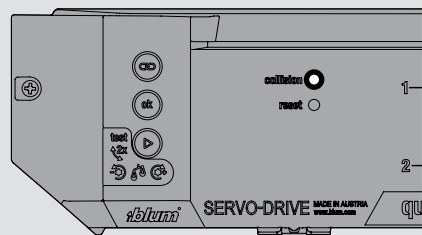
只要有连接的橱前门保持打开的状态,就可以防止其他的橱前门打开。

1



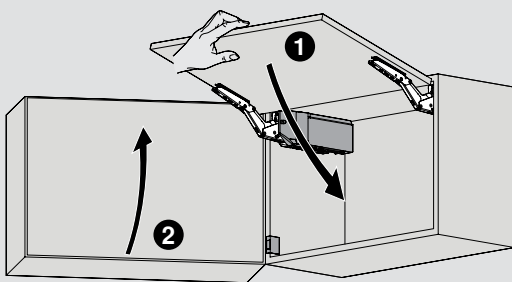
Press [collision] button on first drive unit.
在第一个传动装置按 [collision] 防碰撞按钮。

2



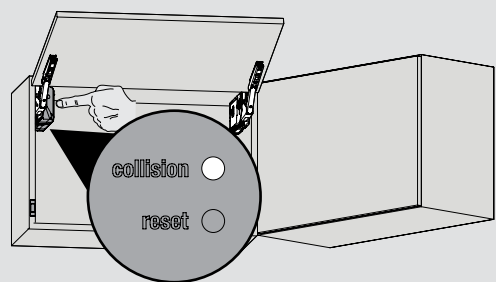
[collision] button lights up in blue continuously.
[collision] 防碰撞按钮会以蓝色的灯持续亮着。

3



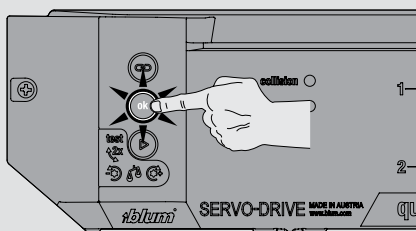
Close front of the first cabinet then open the other front.
将第一个橱前门关上再打开另一个橱前门。

4



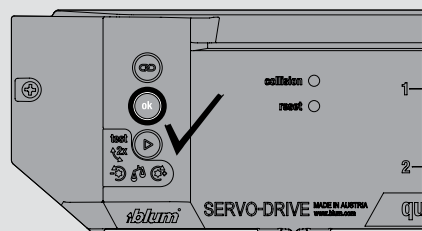
Press [collision] button on second drive unit.
在第二个传动装置按 [collision] 防碰撞按钮。

5



Press flashing [ok] button to complete link.
按闪烁的 [ok] 确认按钮以完成连接。

6



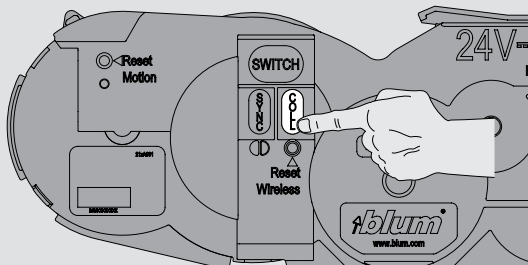
Link is completed when [ok] button lights up continuously.
当 [ok] 确认按钮灯持续亮着时连接以完成。

**AVENTOS HK top
SERVO-DRIVE**
爱翻®灵云展® 电动碰碰开



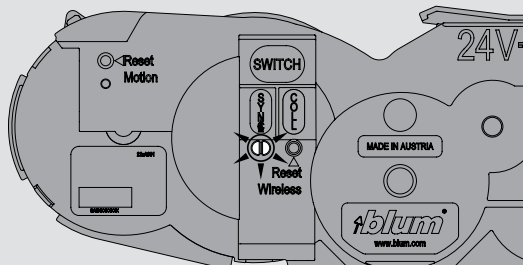
**ⓓ Activate collision avoidance:
with new and first generation SERVO-DRIVE units**
启用防碰撞模式: 新一代和第一代电动碰碰开

1 On first generation 在第一代



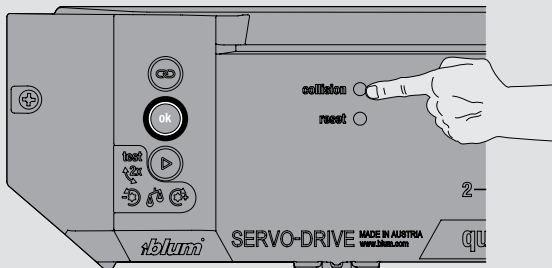
Press and hold [COLL] button.
按住 [COLL] 防碰撞按钮。

2



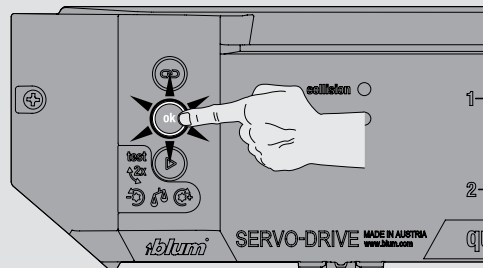
Close front when flashing green light appears.
出现闪烁的绿灯后把橱前门关上。

3 On new generation 在新一代



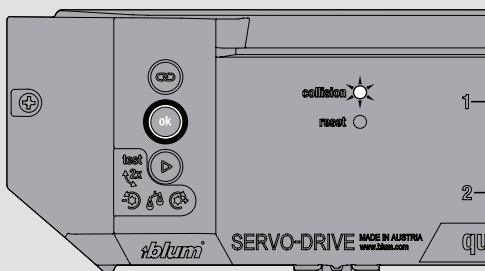
Open front and press [collision] button.
打开橱前门再按 [collision] 防碰撞按钮。

4



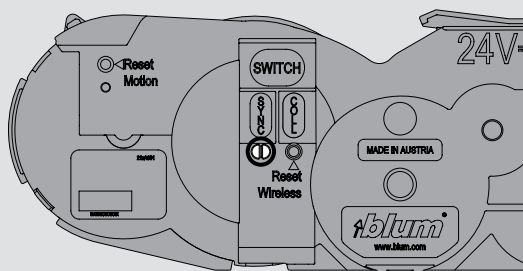
Press flashing [ok] button.
按闪烁的 [ok] 确认按钮。

5



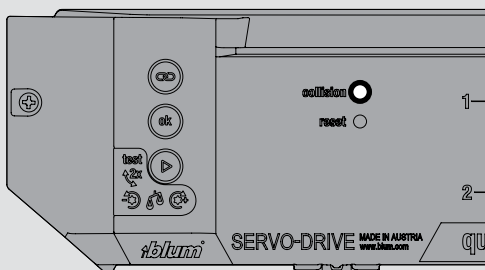
Close front when [collision] button begins to flash.
出现闪烁的 [collision] 防碰撞按钮后把橱前门关上。

6 Back to first generation 回到第一代



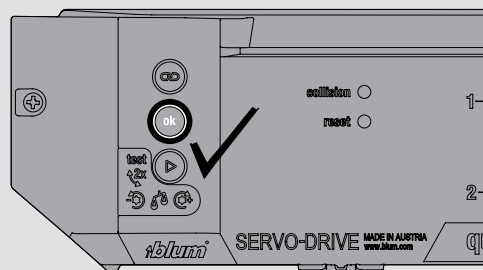
Open front to see flashing LED light. Close front again.
打开橱前门确保出现闪烁的 LED 灯。再把橱前门关上。

7 Back to new generation 回到新一代



Open front to see [collision] button lights up continuously.
打开橱前门确保 [collision] 防碰撞按钮灯持续亮着。

8



Link is completed when [ok] button lights up continuously.
当 [ok] 确认按钮灯持续亮着时连接以完成。

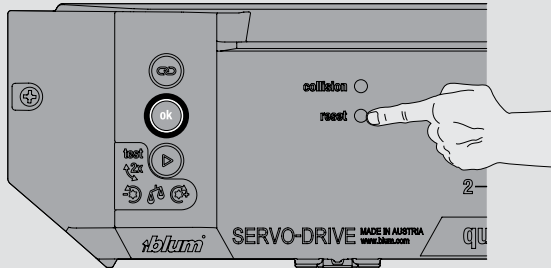
**AVENTOS HK top
SERVO-DRIVE**
爱翻®灵云展® 电动碰碰开



**Ⓔ Reset to factory setting
and SERVO-DRIVE switch battery replacement**
还原出厂设置和电动碰碰开开关电池更换

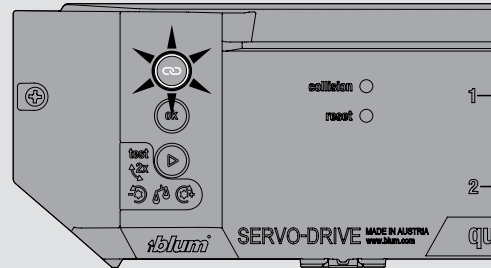
Ⓔ Reset to factory setting 还原出厂设置

1



Press [reset] button.
按 [reset] 重启按钮。

2

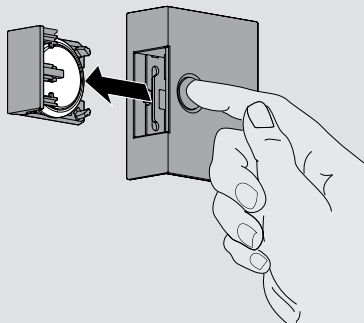


Reset to factory setting is completed when [link] button lights up continuously.
当 [link] 确认按钮灯持续亮着时还原出厂设置以完成。

SERVO-DRIVE switch battery replacement 电动碰碰开开关电池更换

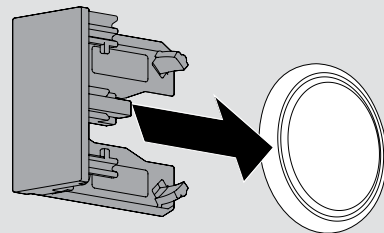
When battery becomes weak or battery is inserted incorrectly, the SERVO-DRIVE switch battery LED light will begin to flash in red.
当电池开始减弱时或电池安装错误时，电动碰碰开开关电池 LED 灯将会出现闪烁的红灯。

1



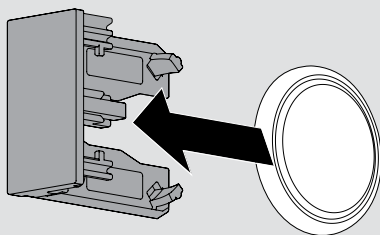
Press release button on the SERVO-DRIVE switch to remove battery tray.
按电动碰碰开开关的释放按钮并取出电池托盘。

2



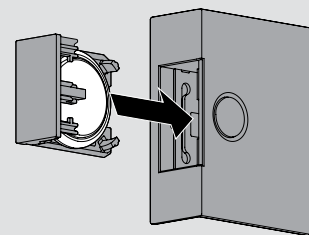
Remove old battery.
取出旧电池。

3



Replace new battery (type CR2032). Note: correct polarity +/-
更换新电池 (CR2032 型)。注意: 正确磁性引力的方向 +/-

4



Insert battery tray back into SERVO-DRIVE switch.
将电池托盘重新插入电动碰碰开开关。



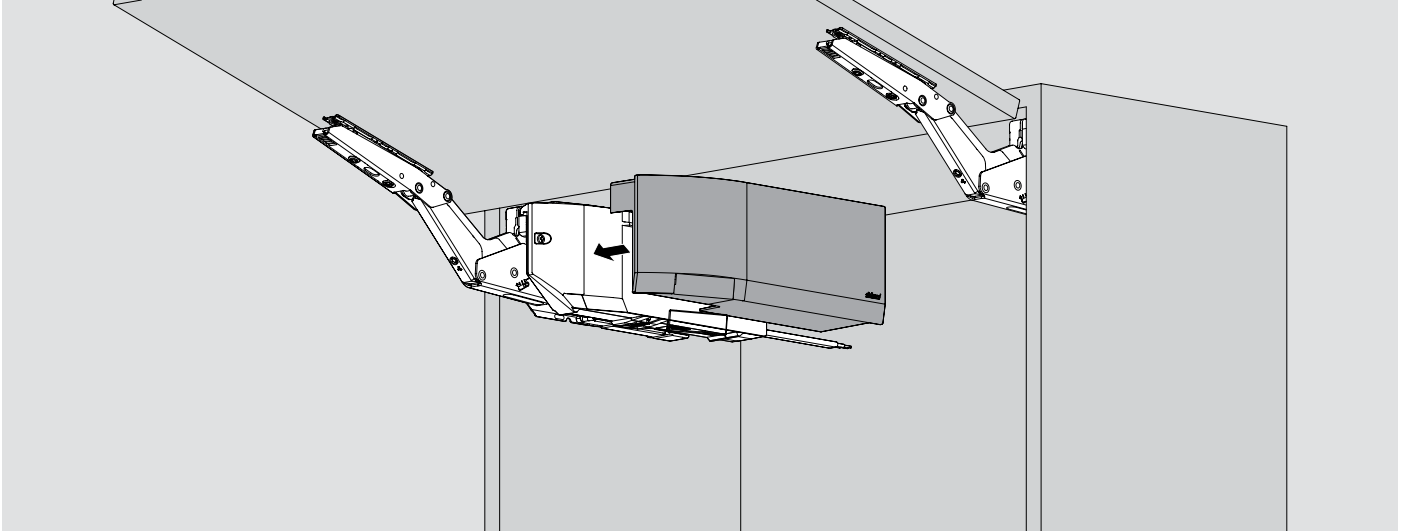
Do not recharged or discard the SERVO-DRIVE switch battery in fire.
不得将电动碰碰开开关电池充电或丢入火中。

AVENTOS HK top
SERVO-DRIVE
爱翻®灵云展® 电动碰碰开

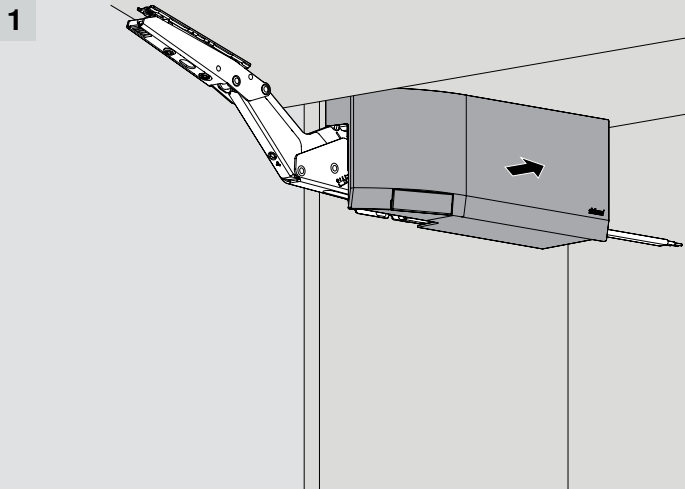


Cover cap assembly and SERVO-DRIVE unit removal
装置装饰盖和电动碰碰开拆卸

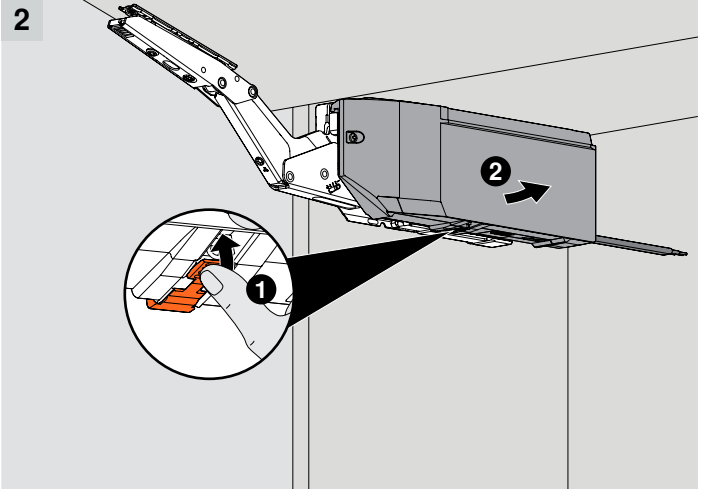
Cover cap assembly 装置装饰盖



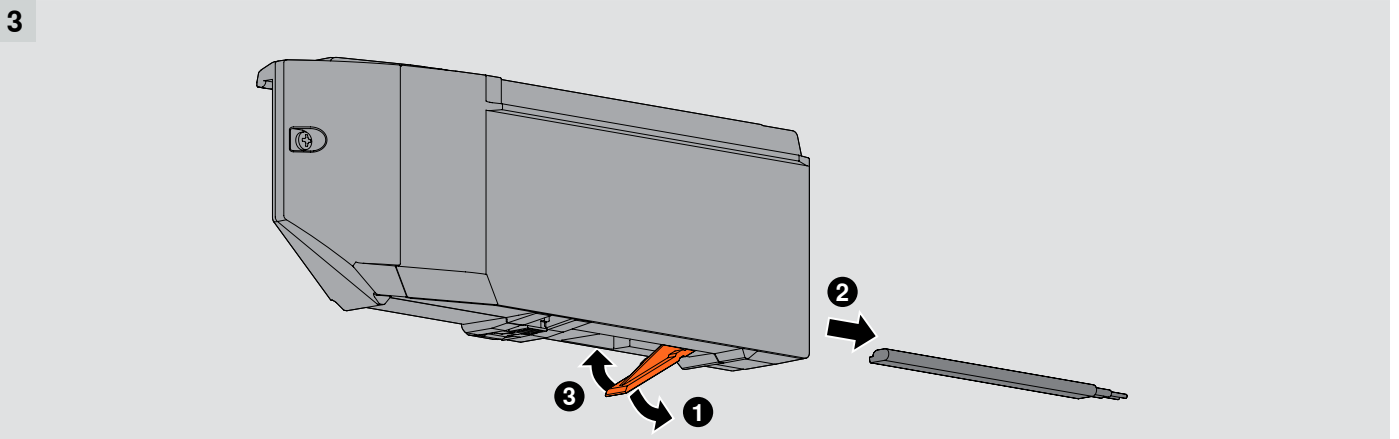
SERVO-DRIVE unit removal 电动碰碰开拆卸



Remove cover cap.
取出装饰盖。



Press the orange release clip and lift drive unit off lift mechanism.
按橙色释放夹然后将传动装置从省力装置取出。



Pull down the orange release clip to remove electrical cable from the drive unit.
拉下橙色释放夹然后将电源线从传动装置取出。